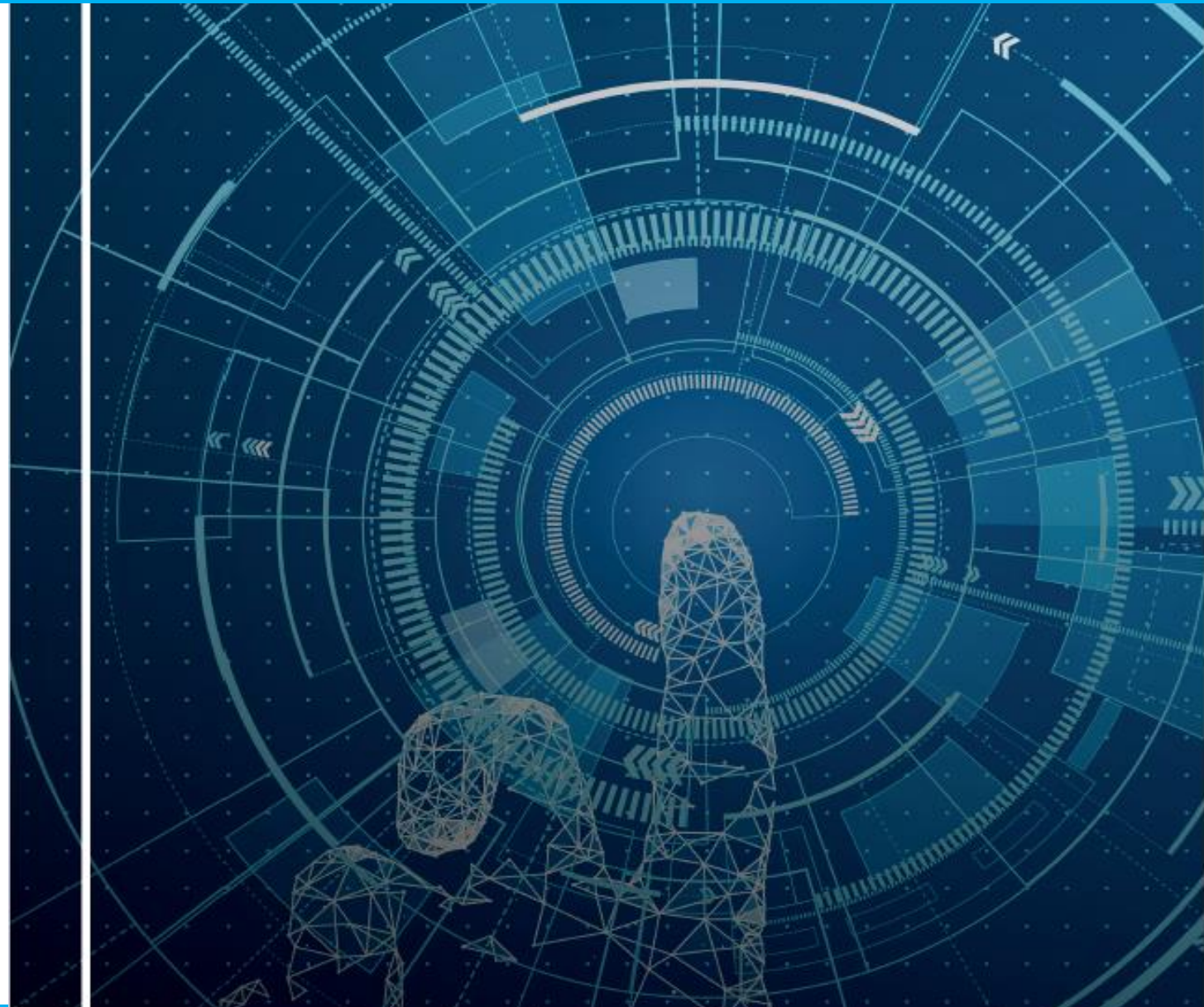


LEAN: Defining 'WHY',
designing 'WHAT' and
planning 'HOW' for BIM.





Colin Mann
Consulting Director
PCSG Limited



Maria Chiozzi
Junior Consultant
PCSG Limited

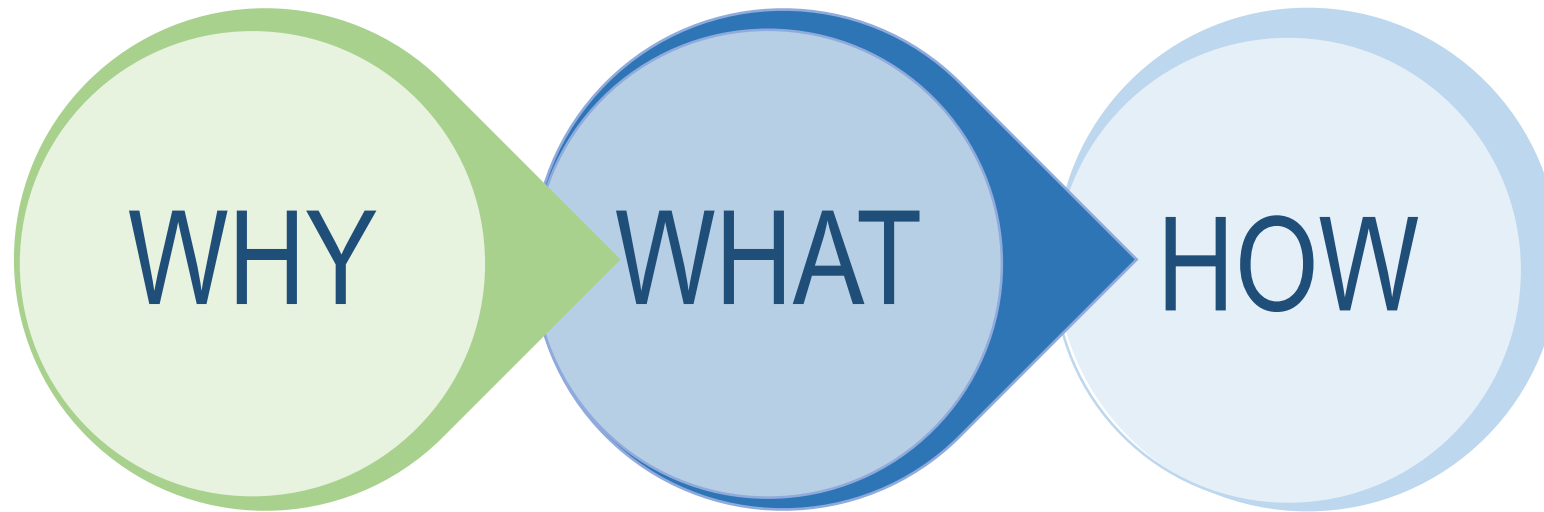
“Instead of asking, “WHAT should we do to compete?” the questions must be asked, “WHY did we start doing WHAT we’re doing in the first place, and WHAT can we do to bring our cause to life considering all the technologies and market opportunities available today?”

Simon Sinek

WHAT

HOW

WHY



LEAN: Defining 'WHY', designing 'WHAT' and planning 'HOW' for BIM.

WHY

HOW

WHAT

Business Case

- Scope & Objectives
- Cost:Benefit
Affordability & deliverability



Symptoms

Capabilities & Use Cases

- What do we want to be able to do that we can't do today?

Root Causes

BIM Target Operating Model

- Process
- Skills & Capacity
- Technology
- Info. Requirements
- Incentives

Implementation Plan

- Governance
- Resources
- Activities

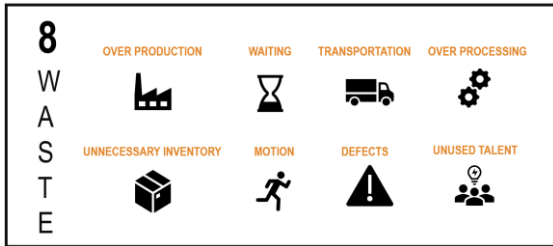
WHY



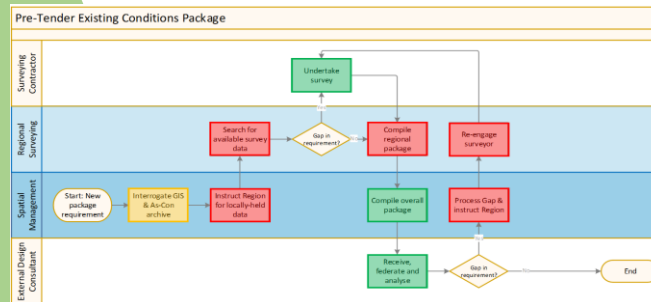
Symptoms

Root Causes

LEAN
Identify symptoms and root causes considering:



LEAN
Value Stream Analysis identifies capabilities, use cases and process design



WHAT

Capabilities & Use Cases

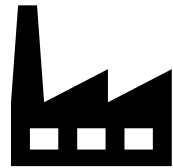
- What do we want to be able to do that we can't do today?

BIM Target Operating Model

- Process
- Skills & Capacity
- Technology
- Info. Requirements
- Incentives

8
W
A
S
T
E
S

OVER PRODUCTION



WAITING



TRANSPORTATION



OVER PROCESSING



UNNECESSARY INVENTORY



MOTION



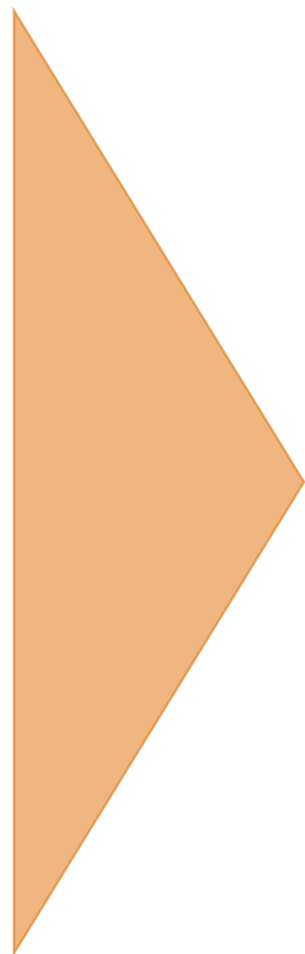
DEFECTS



UNUSED TALENT

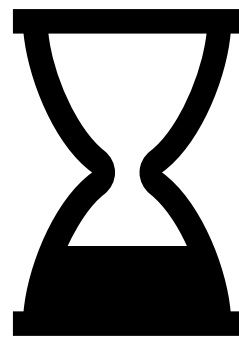


8
W
A
S
T
E
S



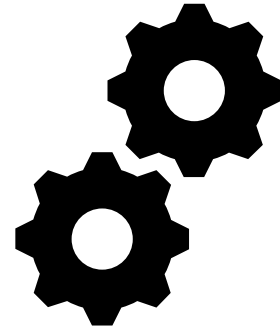
BIM

WAITING



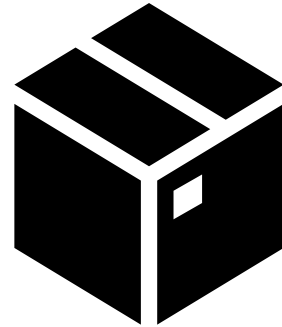
WAITING FOR
INFORMATION TO BE
PROVIDED/TRANSMITTED

OVER PROCESSING



DUPLICATATION, RE-KEYING, MANUAL
PROCESSING - AND THE PROCES OF
REQUESTING INFORMATION

UNNECESSARY INVENTORY



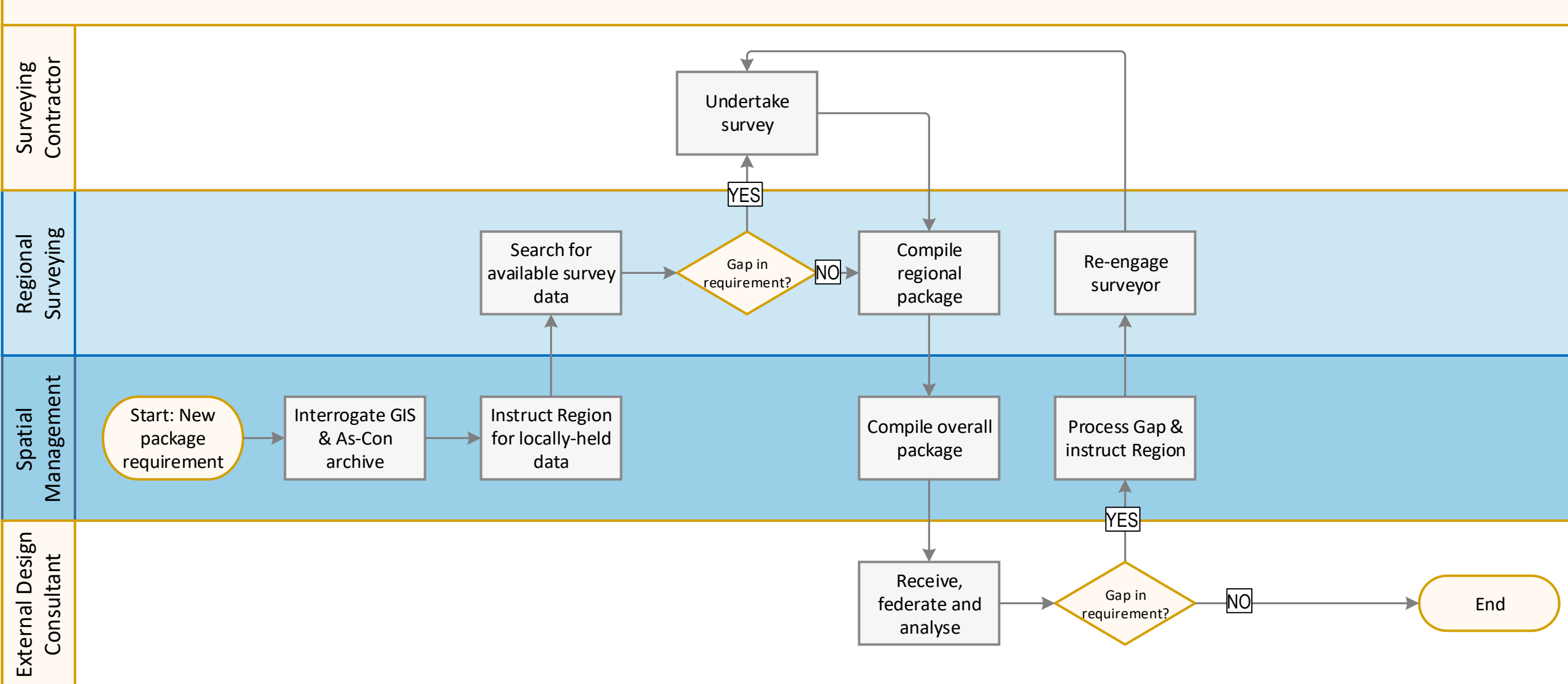
UNNECESSARY, UNUSED AND/OR
OBSOLETE RECORDS, SYSTEMS AND
DATABASES

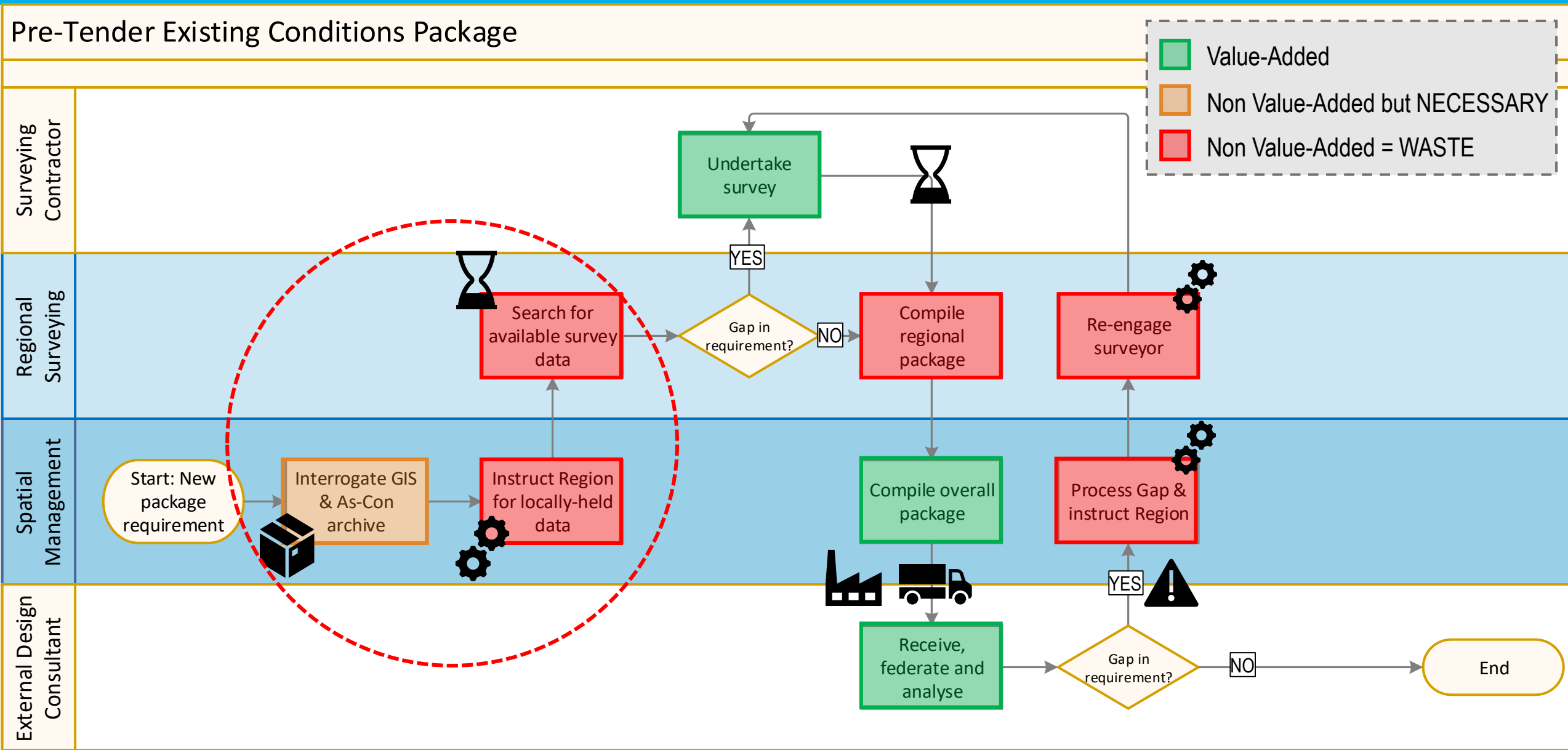
TRANSPORTATION

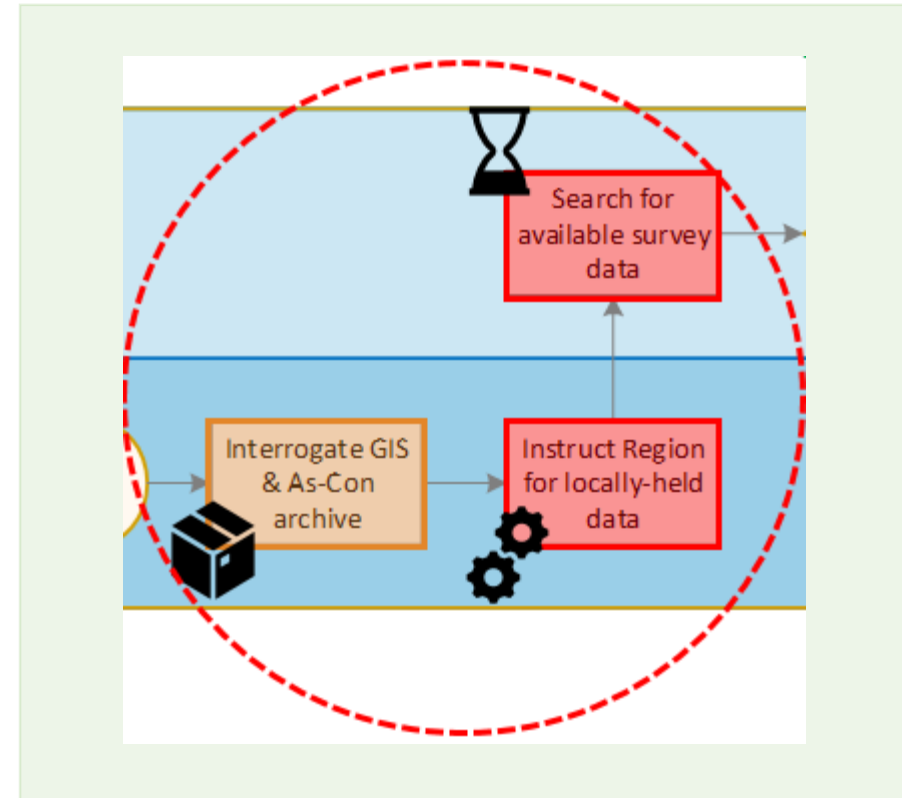
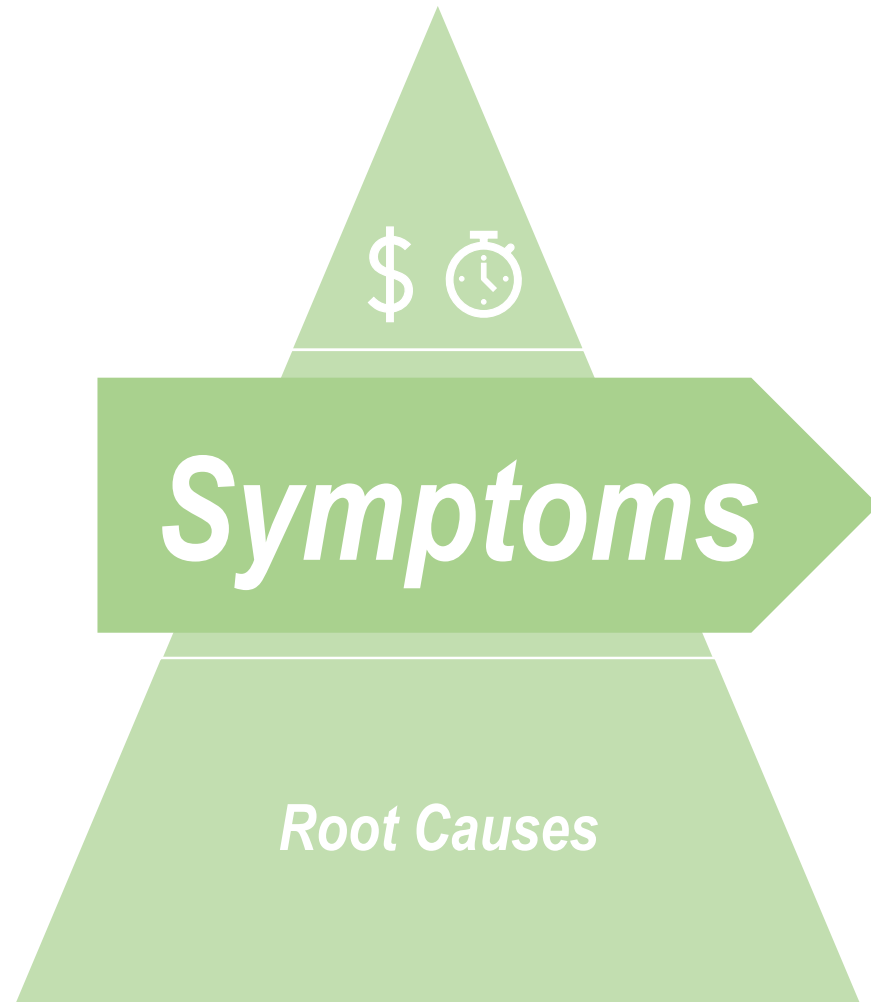


INEFFICIENCY IN EXCHANGES OF
INFORMATION BETWEEN PARTIES

Pre-Tender Existing Conditions Package



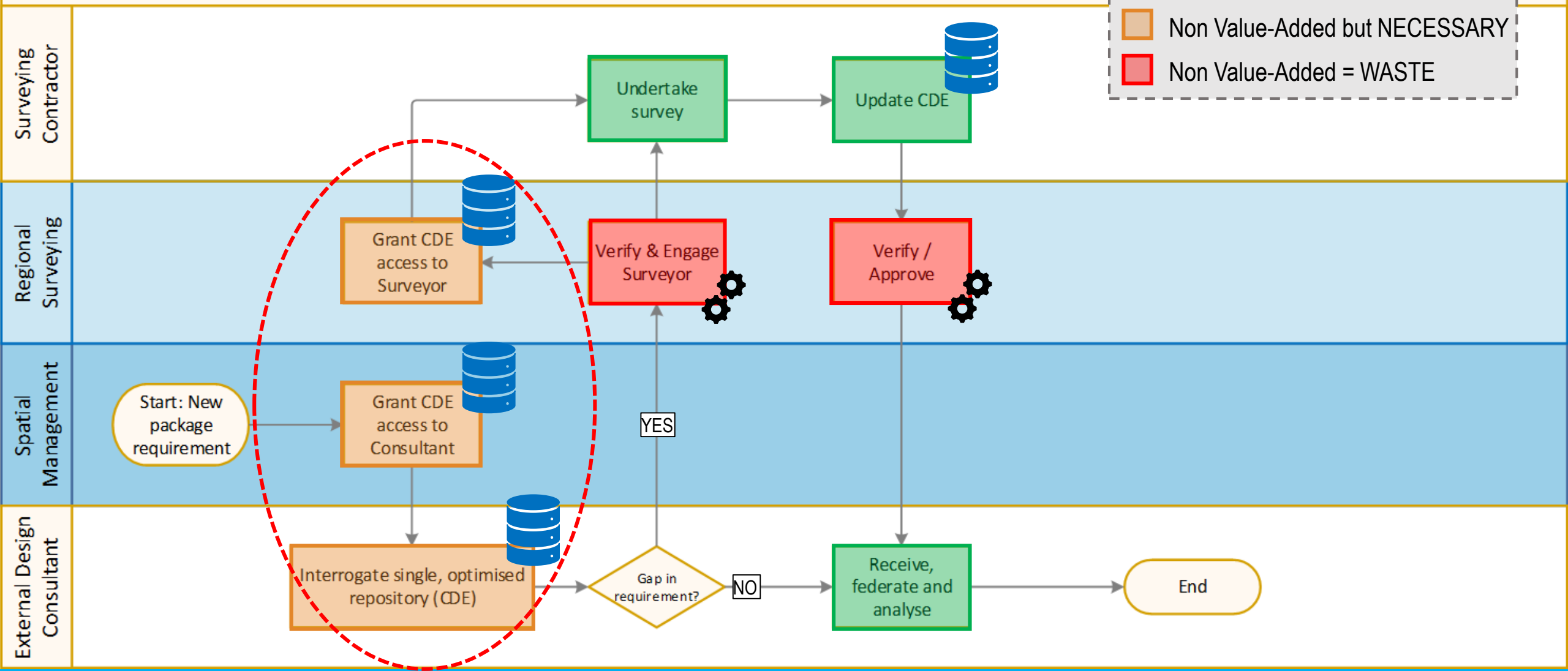


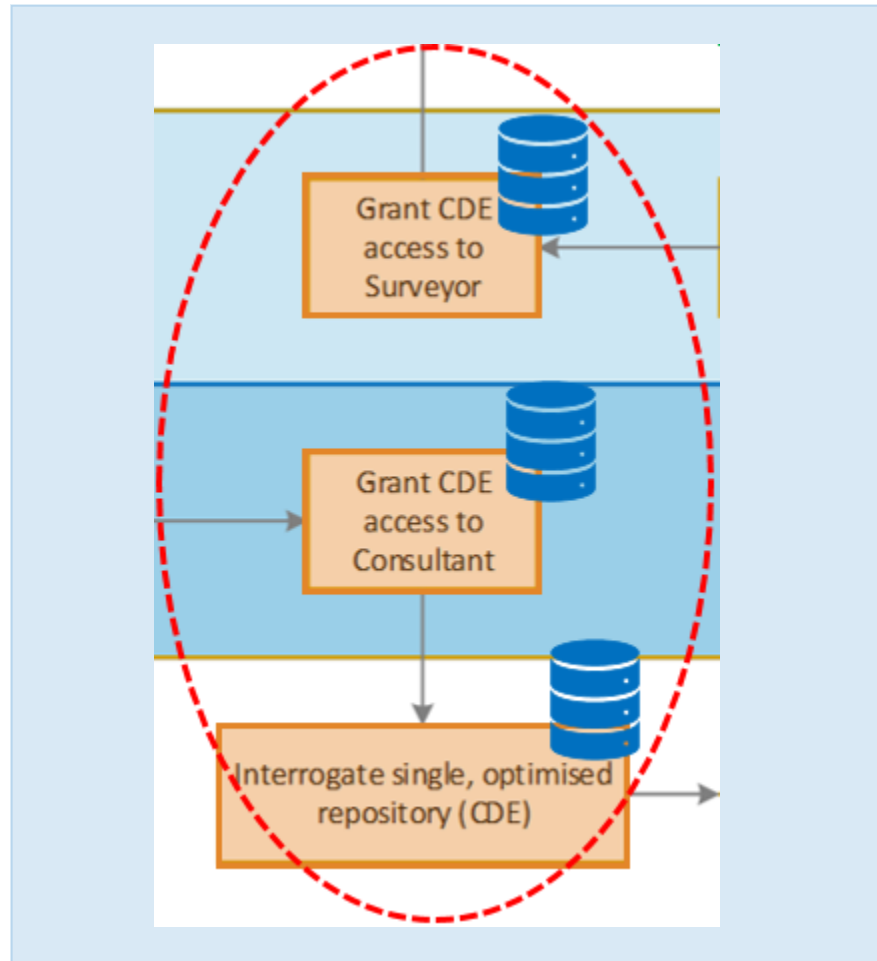


TARGET STATE

Pre-Tender Existing Conditions Package

- Value-Added
- Non Value-Added but NECESSARY
- Non Value-Added = WASTE





AS A SURVEYING MANAGER:

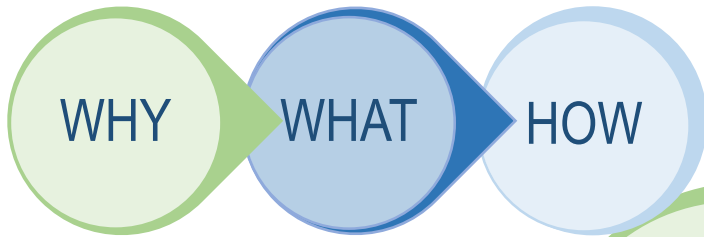
I want to be able to grant limited external access to a CDE;
In order to allow direct interrogation, requirements analysis
and surveying inputs by third parties.

Capabilities & Use Cases

- What do we want to be able to do that we can't do today?

BIM Target Operating Model

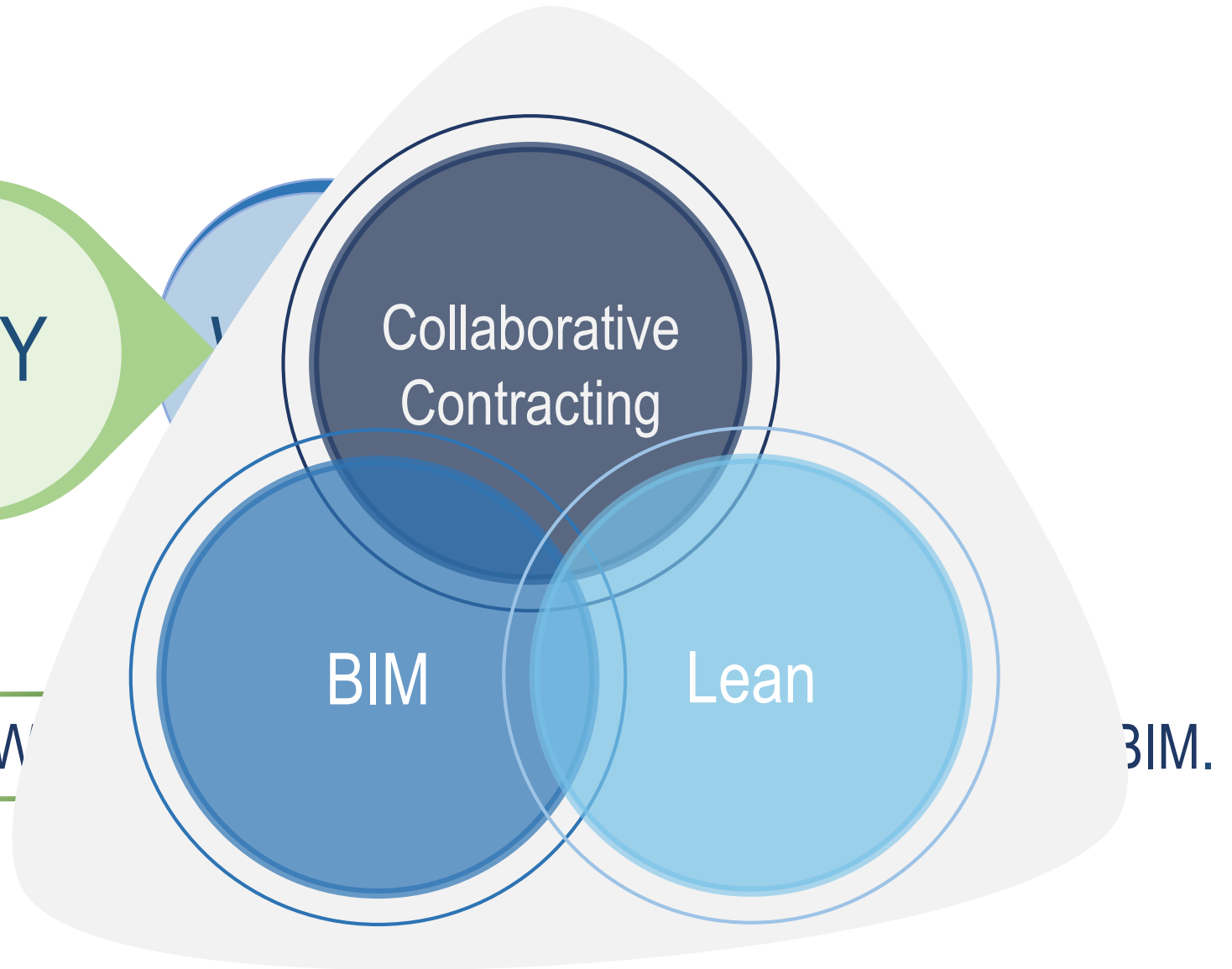
- Process
- Skills & Capacity
- Technology
- Info. Requirements
- Incentives

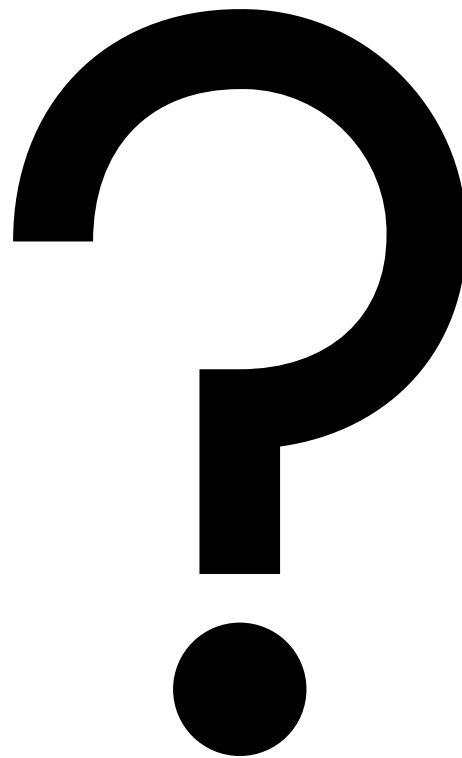


LEAN: Defining 'WHY', designing 'WHAT' and planning 'HOW' for BIM.



LEAN: Defining 'W





Colin Mann

Consulting Director

PCSG Limited

colin.mann@pcsg-australia.com.au